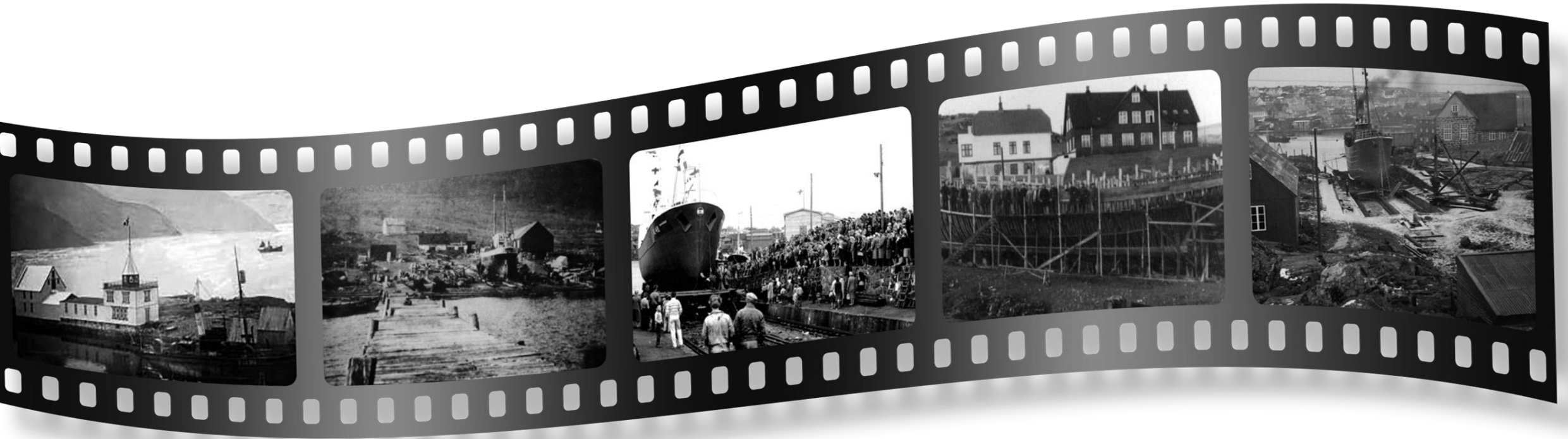




MEST Shipyard

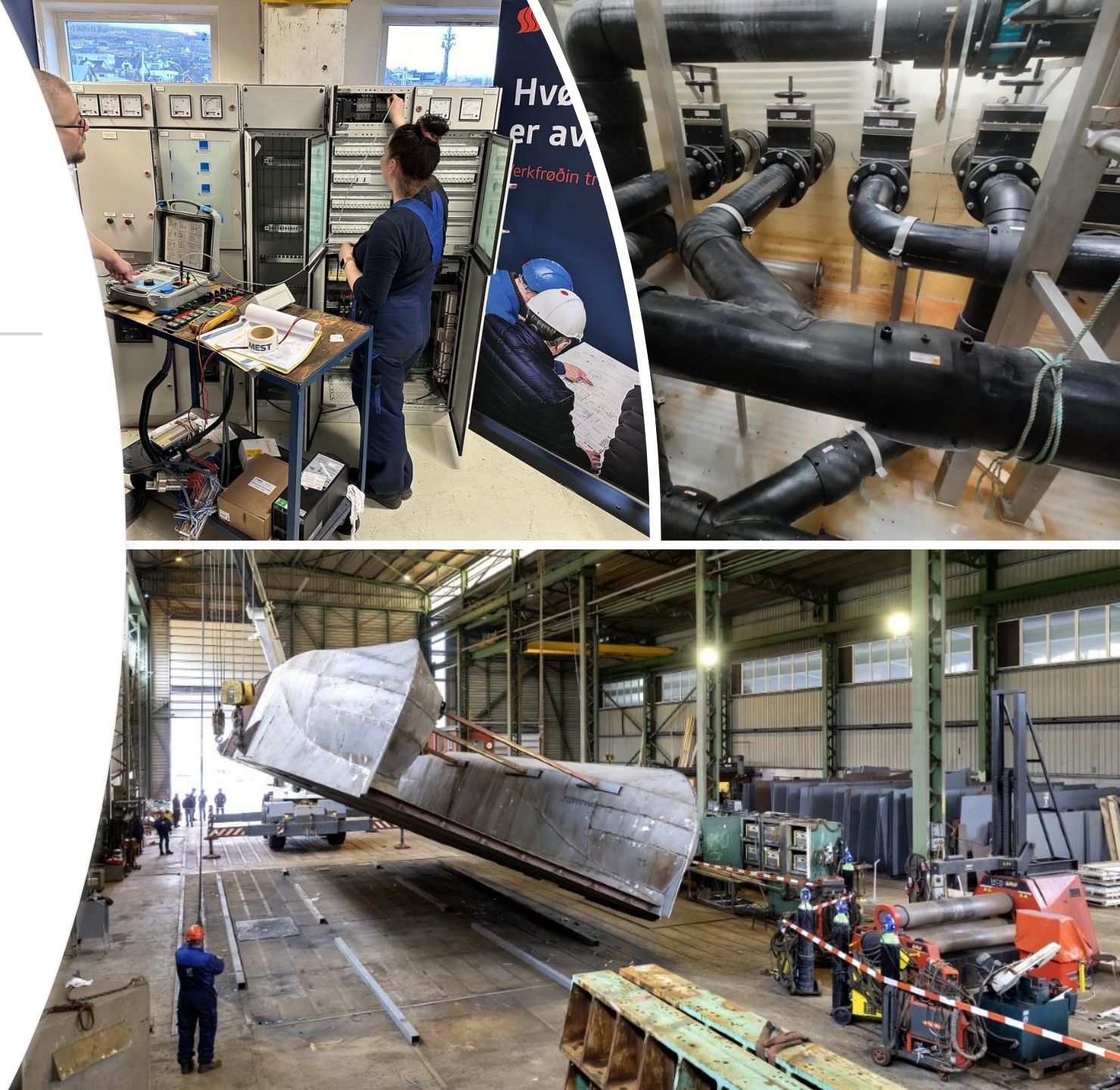


Mest – in brief

- More than 120 years of shipbuilding and shiprepair experience
- 500 employees
- 2 Yards and one Stainless Steel Workshop
- Sales 75m EURO (2024)

MEST Departments In house

- HSEQ & Sustainability
- Machinery
- Steel
- PE Plastics
- Surface treatment
- Electrical
- Technical/engineering Department
- Procurement and storage



PAM Offshore Service – a subsidiary of MEST

Provided manpower to the offshore industry – the last 25 years



100-150 craftsmen in rotation

- Electricians
- Pipefitters
- Certified welders

- ISO 9001:2015 certified
- Oil and gas Europe Achilles
- Epim JQS



MEST Locations



20 minutes between locations



Facilities



MEST Skála

Dry dock	115 x 20 x 6.5 m
Construction hall	60 x 13 x 13 m
Slipway	1,300 ton
Crane capacity	55 ton



MEST Tórshavn

Construction hall	56 x 30 x 11 m
Construction hall	30 x 13 x 8 m
Two slipways	1,000 and 2,500 ton
Crane capacity	55 and 100 ton
Two tug boats	4 and 12 ton
Modern workshop & store	1,200 and 960 sqm
Engineering/drawing office	300 sqm



MEST Runavík

Building in total	2,448 sqm
Including	
- construction hall	
- workshop and store	
- project and drawing office	



Drydock in Skála

Azimut Pit – in the drydock



In the centre of Tórshavn





Facilities in Tórshavn

Construction halls and workshops







MEST Runavík



MEST - stainless steel Workshop

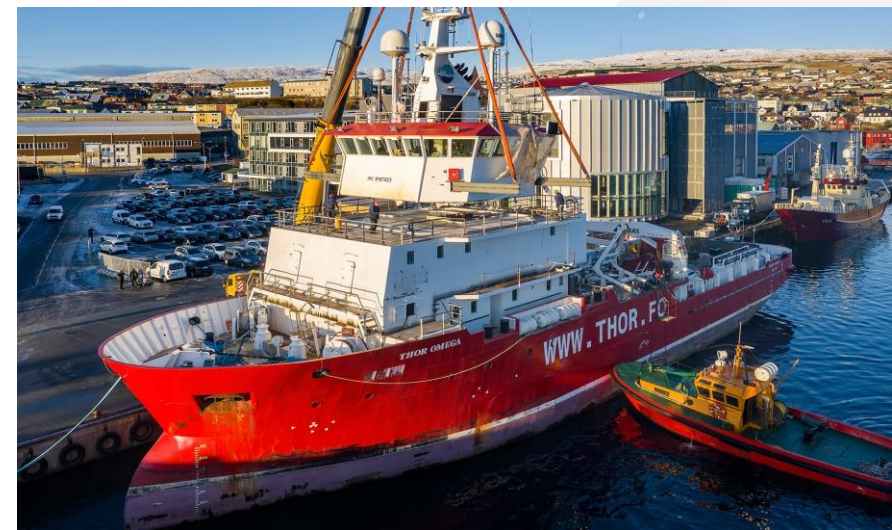
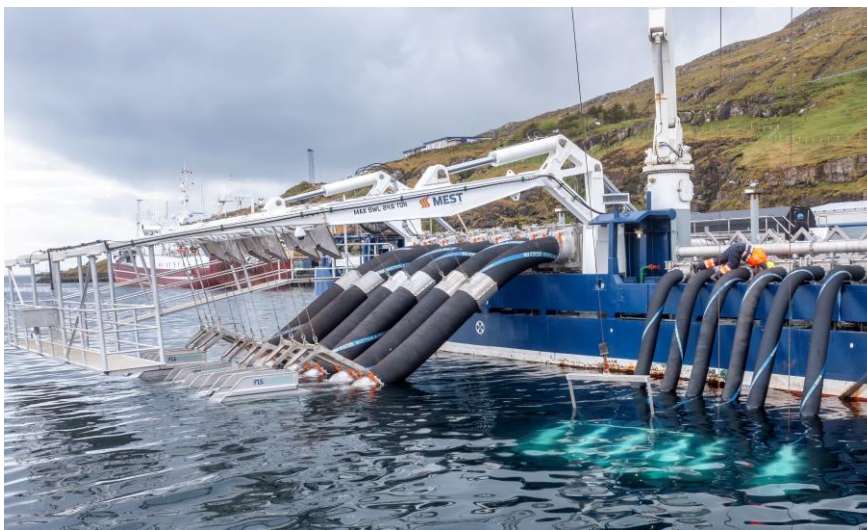


Tug Service – also between countries





Our customer base



Foreign and Faroese customers



Cababilities and facilities



Training facilities

An important part to ensure that we are up to date

Project Management concept – and checklists

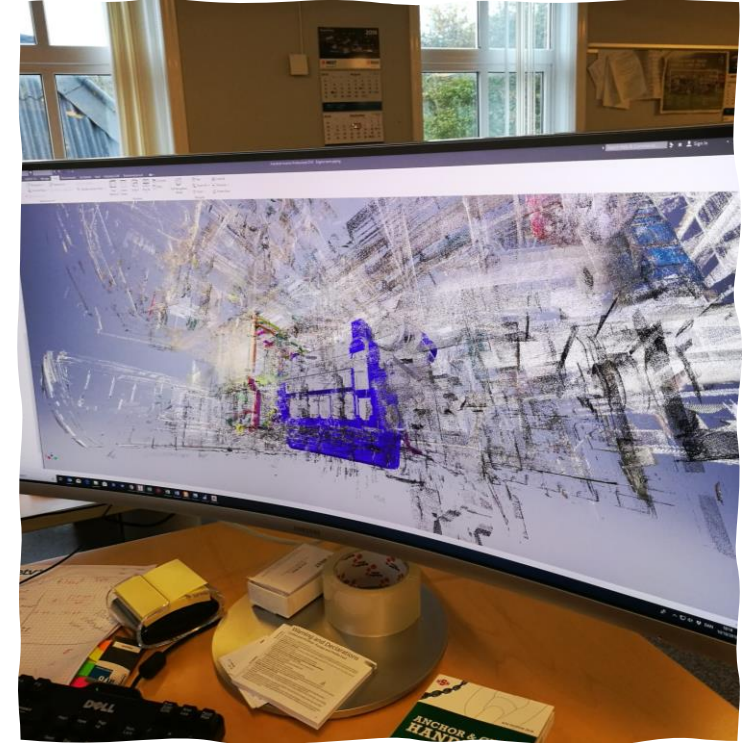


VERKÆTLANARLEIÐSLA Á MEST

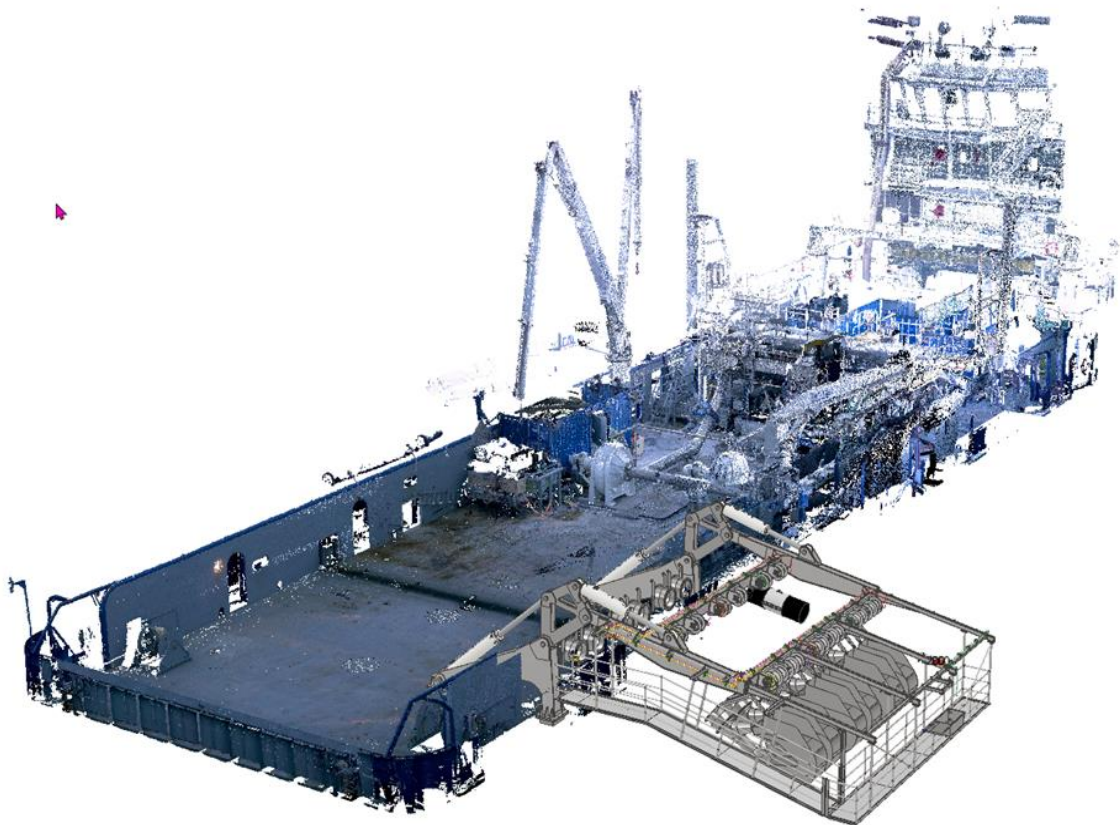


Technical Drawing Department

- State-of-the-art equipment
- ShipConstructor
- 3D
- CAD – Autodesk software
- 16 employees



3D Scanning



3D – example Svend C

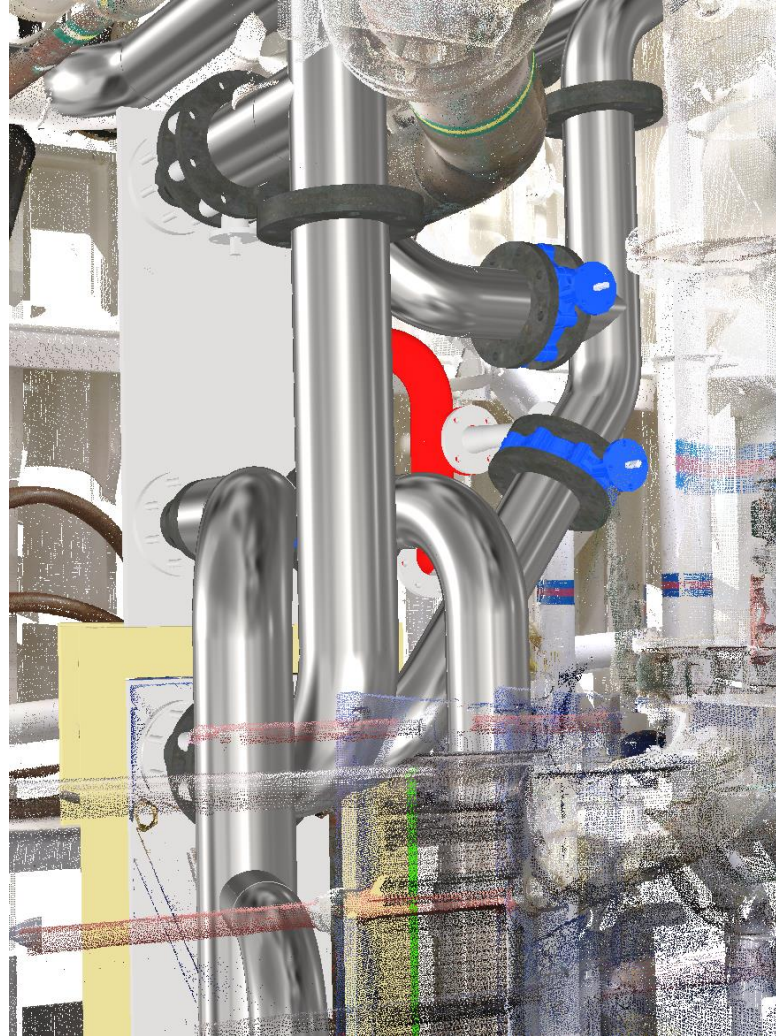


Svend C

3D og installation af Ballast Water Treatment



Scan Cloud in Greenland



Pre-fabricated tube parts



Mounting onboard – in Iceland

Electrical department – all relevant competences

35 employees



Controls and Automation



Electrical Panels



**Troubleshooting, repair and
new construction**

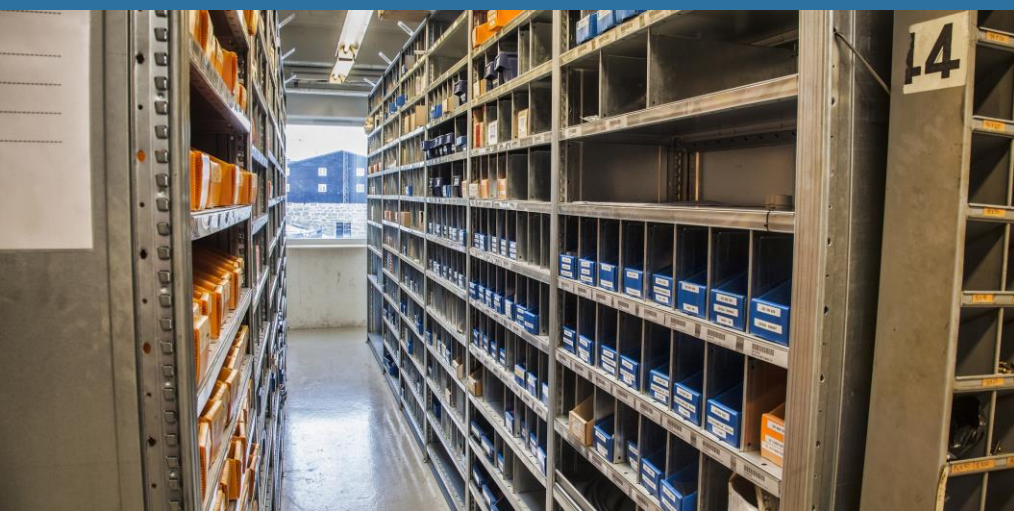


Inspection and maintenance

FMA – approved EI installers
Brunvoll Service agents
Wartsila Service agents
Kongsberg agents
SCADA development
ComAp and DEIF switchboard and generator controls

We represent a number of recognised brands





Spareparts storage – more than 45.000 numbers

- We deliver everywhere – 24/7!
- From filters to engines
- Competitive prices and service level

Other relevant services

Good logistics

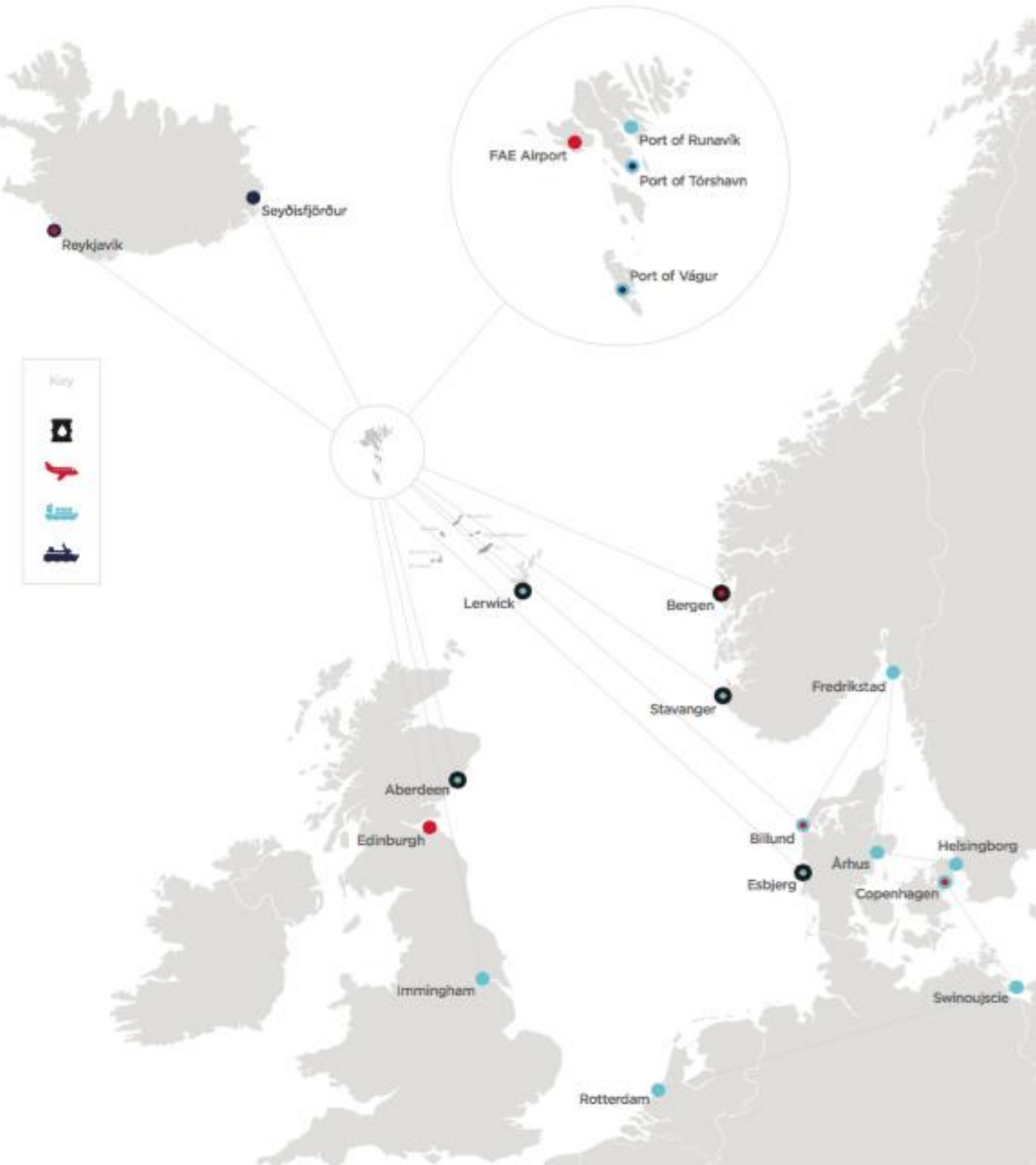
- Frequent flight connections by Airbus – Edinburgh, Bergen, København, Billund, Reykjavík (SAS, Widerø and Atlantic Airways)
- Weekly container transport – 3 different shipping lines
- Hotels and restaurants – at international standard





FarCargo - 3 times a week:

**Brussels and Liege in Belgium, Shannon in Ireland and East Midlands in the UK
most regular destinations**



Transportation network



Reference of work

West Hercules oil rig in the Faroes

MEST Shipyard and PAM Offshore Service



Gross Tonnage: 40.731t

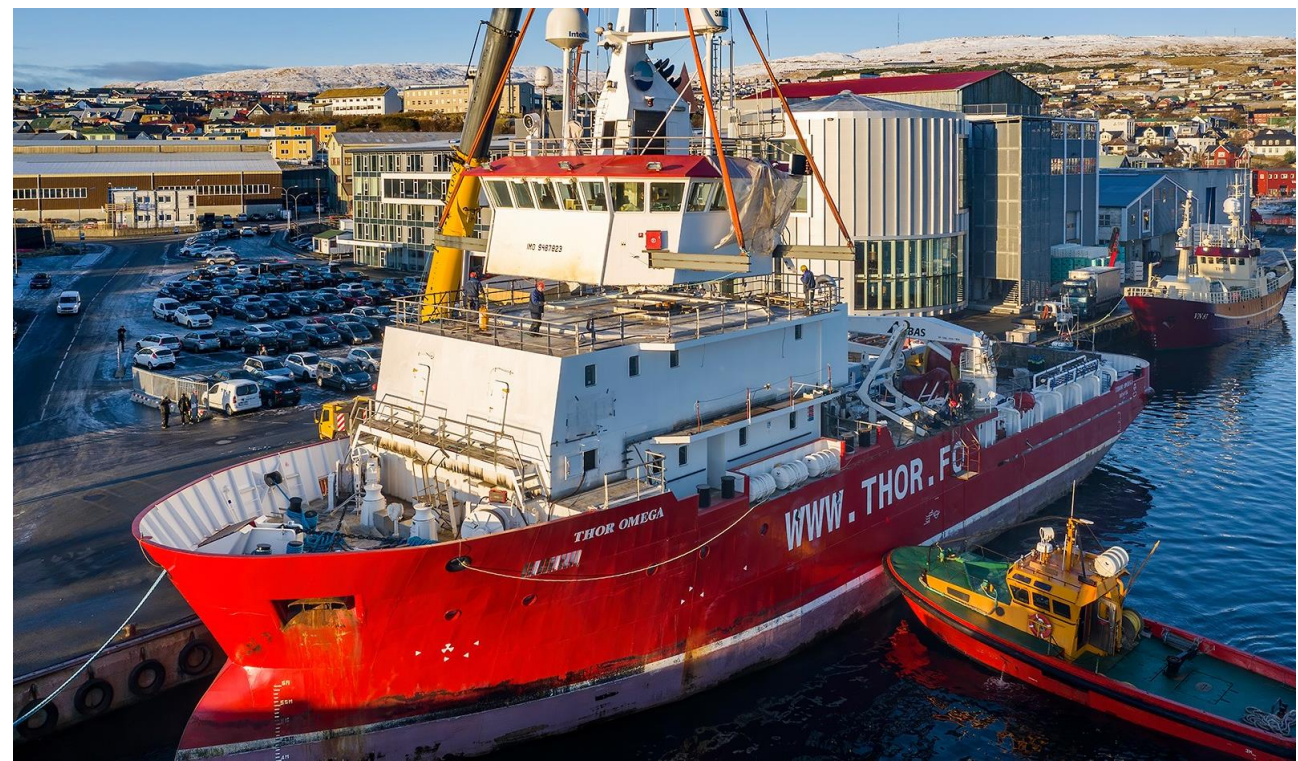
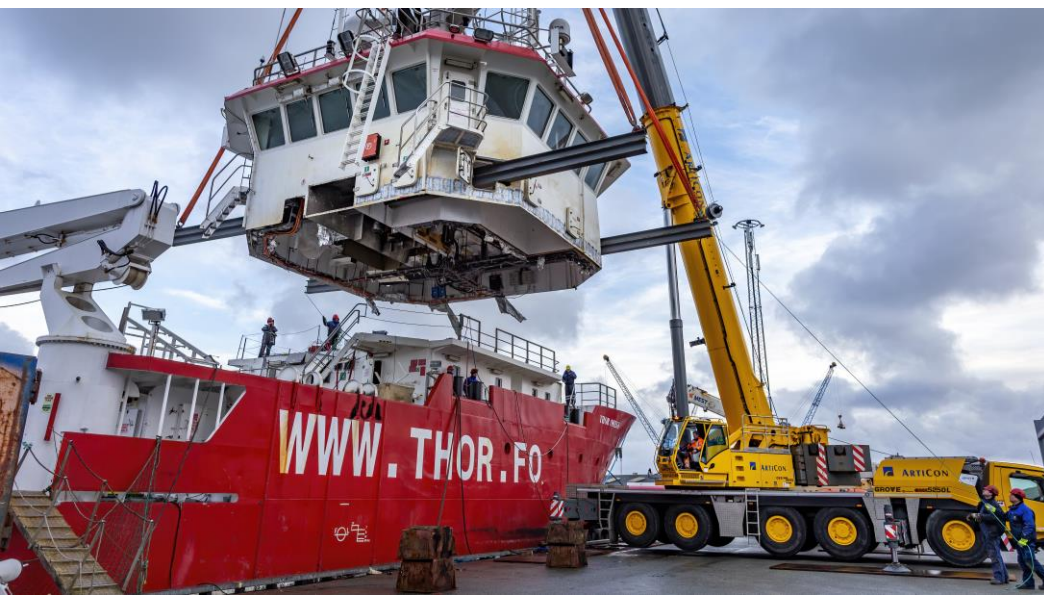
Length x Breadth:

116,5m x 96,6m

Height: 128m

Year Built: 2008

Operated by Statoil



Esvagt “Cassiopeia” February 2025

Excellent feed-back from Esvagt





Experience from a number of large projects

Now: 80 persons working on Johan Castberg



Oceanic Research Vessel December 2020

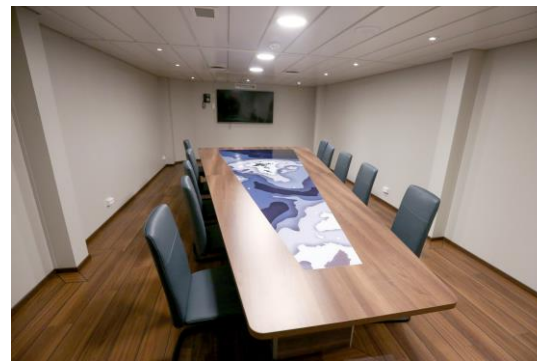
Delivered at the agreed time and cost



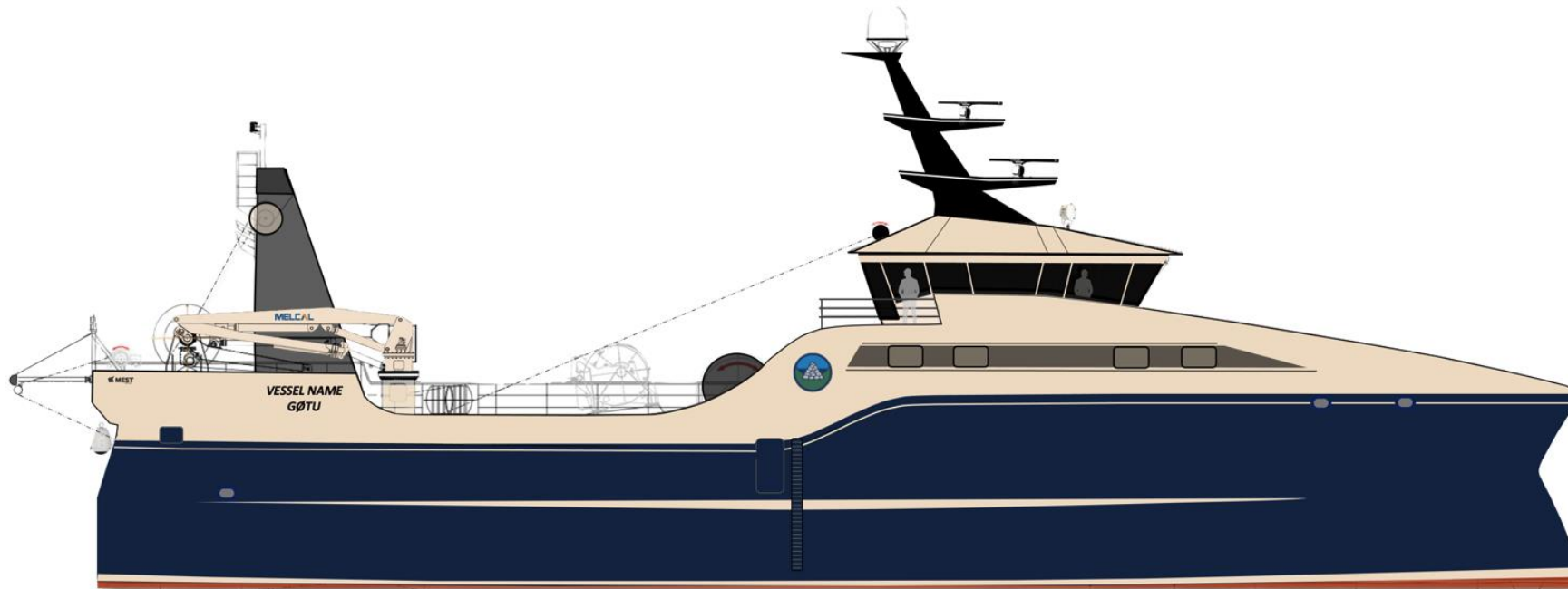


**2/3 of the work was undertaken
in the Faroes**

NB113 Work finalised in the Faroes



Freezing trawler NB118



Length: 44 m

Width: 11,6 m

Motor: Wartsila-25 motor, 2611 HK

Factory: 40 tons frystiorku/dagin

Delivered: Summer 2026



2 ferries to SSL Ferry company

MEST has engineered and been responsible for the design of 2 ferries, which SSL plans to build

Delivered: 1-2 years (one ferry)

New vessels getting bigger



New dry dock ready in 2026

LENGTH: 150m **WIDTH:** 33m **DEPTH:** 11,5m



 **MEST**

Work is going according to plan





Thank you!

